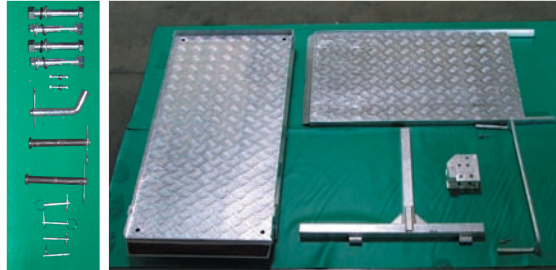


# TILT-A-RACK® MOBILITY

## ASSEMBLY INSTRUCTIONS FOR TILT-A-RACK® MODELS 350ARV, 350ARV MINI, 500ARV, 500ARV PLUS.

### HERE'S WHAT YOU RECEIVED:

- (2) Hinge-Pins
- (2) Carrier Assemblies
- (1) 5/8" Bent Hitch-Pin
- (1) Small Hitch-Pin
- (2) Spring Pins
- (1) 15/16 Nut and Bolt



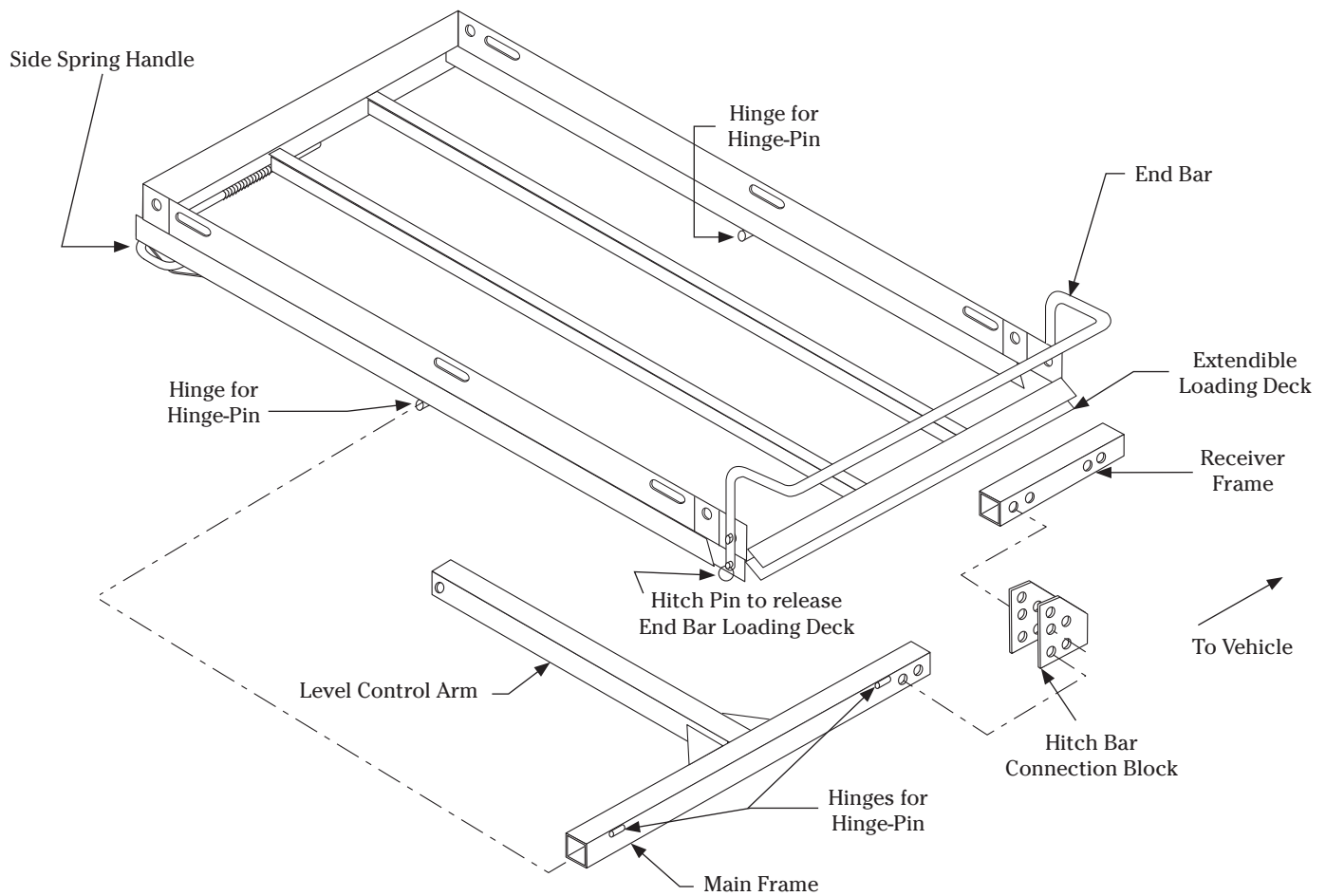
### HERE'S WHAT YOU'LL NEED:

- 1/2" Drive Ratchet
- 15/16" Socket
- Pliers
- Crescent Wrench



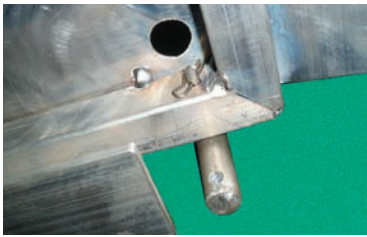
### IMPORTANT NOTE:

Although our carriers can be assembled by one person, we highly recommend that you have a helper.



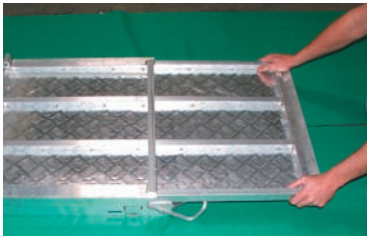
**IF YOU HAVE QUESTIONS REGARDING THE ASSEMBLY OF THIS UNIT,  
OR HAVE MISSING PARTS, PLEASE CALL 1-866-777-9727.**

**Tilt-a-Rack® Mobility also carries a wide selection of accessories for your new carrier!**  
Custom tie-downs, covers, hitch adapters, Bogie Wheels, and more, we've got what you need to **LOAD and GO!**  
Go to [www.tiltarackmobility.com](http://www.tiltarackmobility.com) or call **1-866-777-9727** for more information.



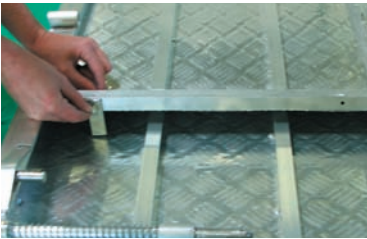
### STEP 1

Place Deck upside down. Then you will need the End Bar which is a thin round bar that attaches to the loading side of the Deck. Insert (2) Small pins with flat edge and secure with R Pins.



### STEP 2

Insert the Deck Extender into the upside down position in to the deck.



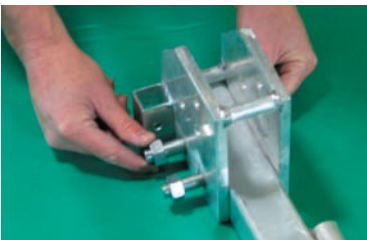
### STEP 3

Attach the two Deck Extender Stoppers to the end of the Deck Extender with (2) small bolts and tighten with two wrenches.



### STEP 4

In this step you will be connecting the Hitch Bar Connection Block to the T-Bar using 15/16th bolts and nuts.

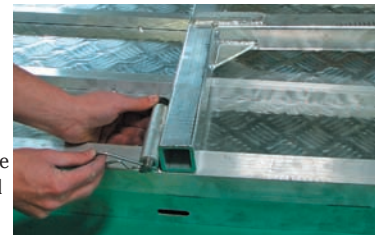


### STEP 5

Tighten the nuts on the bolts using your fingers and 15/16th socket and wrench.

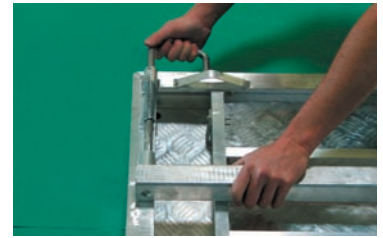
### STEP 6

Place T-Bar on the bottom of the Deck lining up the two hinge points. Insert (2) Roll Pins that have an open hole end on the outside of the hinge points closest to you. Secure Roll Pins with the (2) R Pins. The end on the T-bar should be resting on the spring handle bar.



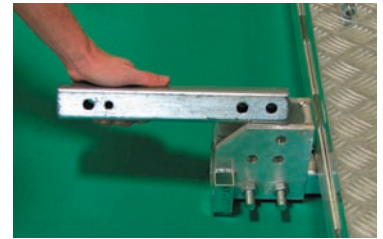
### STEP 7

Pull Spring Handle until T-Bar drops down and release Spring Handle.



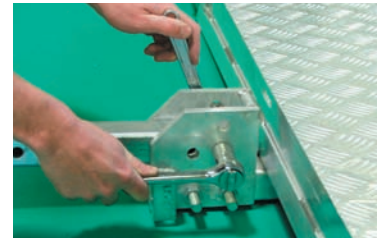
### STEP 8

Place the Hitch Bar into the Hitch Bar Block with the two 5/8th holes on the same side. Insert (1) 15/16th bolt and nut into the furthest hole.



### STEP 9

Tighten the bolt with a 15/16th socket and wrench. The tighter this is the tighter the bar will pivot. This will need to be adjusted to fit your ability to use this product.



### STEP 10

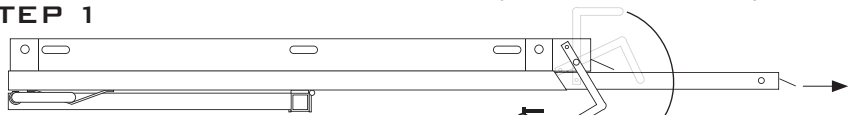
Turn over rack to the right side up. Pivot End Bar to the correct position and insert Locking Pin on both sides to secure the Deck Extender to the unit.



## OPERATING INSTRUCTIONS FOR TILT-A-RACK®

MODELS 350ARV, 350ARV MINI, 500ARV, 500ARV PLUS.

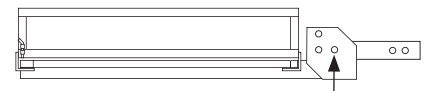
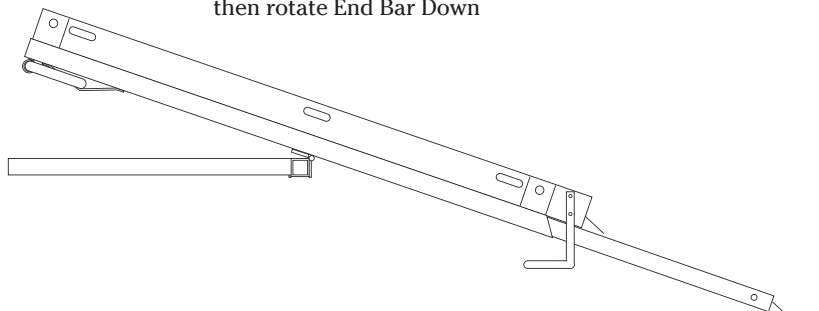
### STEP 1



Pull Pin out to release End Bar and Loading Deck, then rotate End Bar Down

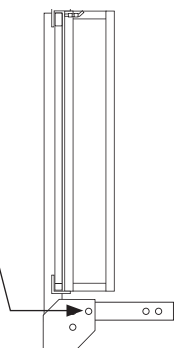
Pull Loading Deck out

### STEP 2



Pin location for installing to your vehicle

Pin location for vertical storage to eliminate the extra length without removing rack from vehicle



### STEP 3 - LOAD YOUR UNIT AND GO!

**IF YOU HAVE QUESTIONS REGARDING THE ASSEMBLY OF THIS UNIT, OR HAVE MISSING PARTS, PLEASE CALL 1-866-777-9727.**